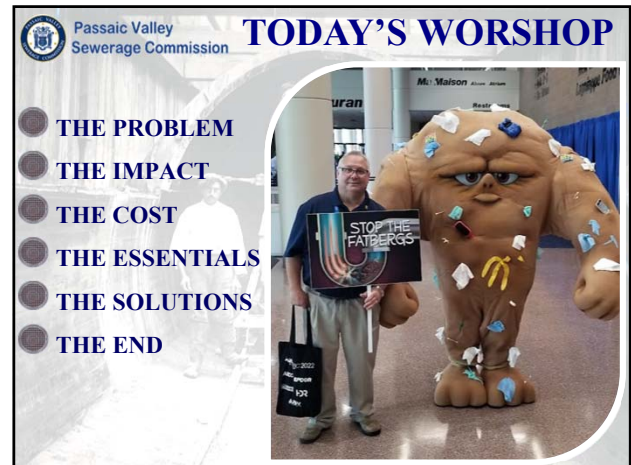


1



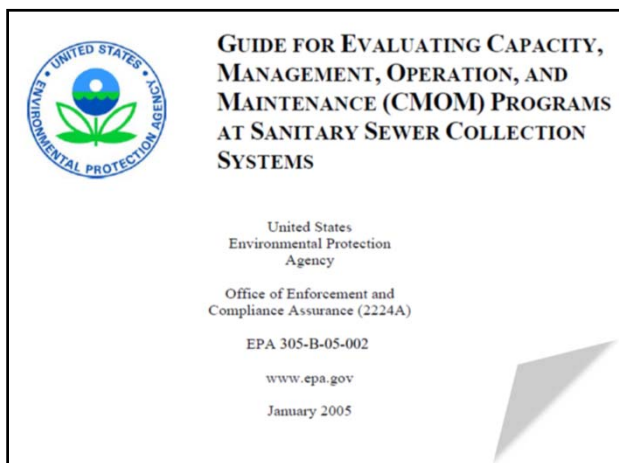
2



3



4



5



6

Passaic Valley Sewerage Commission **WHAT IS C.M.O.M.?**

It is a flexible, dynamic framework for municipalities to identify and incorporate widely accepted wastewater industry practices to:

1. Better manage, operate, and maintain collection systems
2. Investigate capacity constrained areas of your system
3. Respond to sanitary sewer overflow (SSO) events
4. Proactively prevent sanitary sewer overflows

7

Passaic Valley Sewerage Commission **TO WHOM DOES IT APPLY?**

**"1-1 Purpose of this Guide"**

"The guide is applicable to small, medium, and large systems; both publicly and privately owned systems; and both regional and satellite collection systems."

This document does not, however, substitute for the CWA or EPA's regulations, nor is it a regulation itself. Thus, the **"document does not and cannot impose legally binding requirements"** upon these circumstances.

8

State of New Jersey  
DEPARTMENT OF ENVIRONMENTAL PROTECTION

CHRIS CHRISTIE  
Governor  
KIM GUADAGNO  
Lt. Governor

Northern Bureau of Water Compliance and Enforcement  
7 Ridgedale Avenue  
Cedar Knolls, New Jersey 07927-1112  
Telephone (973) 856-4059 Fax (973) 856-4400  
May 17, 2016

BOB MARTIN  
Commissioner

CERTIFIED MAIL/RRR  
7011 3500 0001 9029 2002

City Sanitary Collection System  
330 Passaic Street

RE: Compliance Evaluation and Assistance Inspection  
City Sanitary Collection System  
PROGRAM INTEREST ID # 207752  
PROGRAM: Water Quality / Compliance Activity # SCI 160001  
City / Passaic County

Dear Mr. [REDACTED]:

A Compliance Evaluation and Assistance Inspection of your facility was conducted on April 27 & May 3, 2016. Please address any items or concerns noted on the comments section of the attached report.

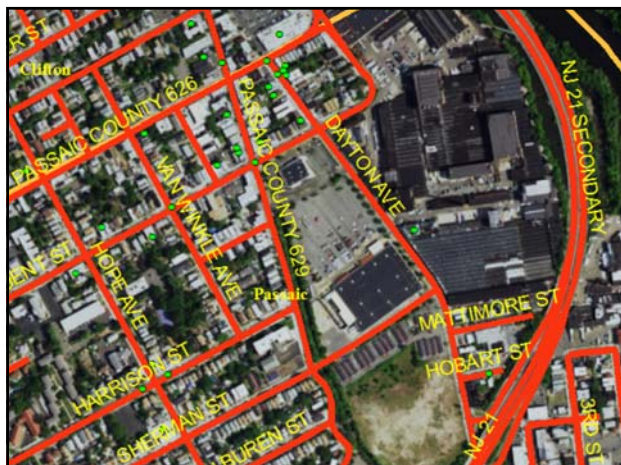
The items noted in the attached report with a compliance status of "ON" or "ND" have placed your facility in violation of Water Pollution Control Act. A written report concerning specific details of remedial measures to be instituted for these items, as well as an implementation timetable, must be submitted to this Bureau within thirty (30) calendar days of receipt of this correspondence.

You are advised that the New Jersey Water Pollution Control Act (N.J.S.A. 58:10A-1 et seq.) provides for substantial penalties in cases of violations of the Act. Therefore, your prompt attention to this matter is anticipated.

9



10



11

Fats, oils, and greases aren't just bad for arteries and waistlines; they're bad for sewers, too.

Sewer overflows and backups can cause health hazards, damage home interiors and threaten the environment. A common cause of overflows is sewer pipes blocked by grease. Grease gets into the sewer from household drains as well as from poorly maintained grease traps in restaurants and other businesses.

**yes** **sí**

Las grasas y los aceites no sólo son perjudiciales para las arterias y para la figura; también son dañinos para las alcantarillas.

Los derrames y desbordamientos de aguas residuales pueden ser peligrosos para la salud, dañar el interior de los hogares, y amenazar el medio ambiente. Una causa cada vez más común de derrames es las alcantarillas obstruidas por grasa. La grasa llega a las alcantarillas desde los desagües domésticos y trampas de grasa mal mantenidas en restaurantes y otros negocios.

Water Environment Federation  
101 Wythe Street  
Alexandria, Virginia  
22314-1994 USA  
Tel: 1-800-695-0205  
Fax: 1-703-684-2462  
www.wef.org

RECYCLED  
New water from  
wastewater  
F827 CMB164

H21102 2/2011

**Fat-Free Sewers**  
Prevent Fats, Oils, and Greases from Damaging Your Home and the Environment

**ALCANTARILLAS SIN GRASA**  
Evite que las grasas y los aceites dañen su hogar y el medio ambiente

12



### Helping To Prevent Sewer Overflows and Backups Is Easy.

**Where Does the Grease Come From?**

Grease is a byproduct of cooking that comes from meat fats, lard, oil, shortening, butter, margarine, food scraps, baked goods, sauces and dairy products. When washed down the sink, grease sticks to the inside of sewer pipes (both in your property and in the street). Over time, it can build up and block an entire pipe.

**Caution:** Home garbage disposals do not keep grease out of the plumbing system. Moreover, hot water and products such as detergents that claim to dissolve grease only pass it down the line and cause problems elsewhere.

**The results can be:**

- Raw sewage overflowing in your home or the house next door.
- An expensive and unpleasant cleanup that often must be paid for by you, the home or business owner.
- Raw sewage overflowing into parks, yards, and streets.
- Potential contact with disease-causing organisms.
- An increase in operation and maintenance costs for local sewer departments, which leads to higher sewer bills for customers.

**You Can Help! Help prevent sewer overflows by:**

- Never pouring grease down sink drains or into toilets.
- Scraping grease and food scraps into a can or the trash for disposal (or recycling where available).
- Putting baskets/strainers in sink drains to catch food scraps and other solids, and emptying them into the trash.
- Speaking with your friends and neighbors about how to keep grease out of sewers.

### Es fácil prevenir los derrames y desbordamientos de aguas residuales.

**¿De dónde proviene la grasa?**

La grasa, uno de los productos derivados de la preparación de comida, está presente en la carne, mariscos, aceites vegetales, margarina, mantequilla, margarina, salsas de comida, productos para hornear, salsas, y productos lácteos. Cuando entra por el desagüe, la grasa se pega al interior de las tuberías de alcantarillado (tanto las de su propiedad como las de la calle); con el tiempo, puede acumularse al punto de bloquear la tubería por completo.

**Advertencia:** Los intrusos de basuras domésticas no impiden la entrada de agua al sistema de alcantarillado. Además, el agua caliente y los productos como los detergentes que afirman ser capaces de disolver la grasa, pueden trasladarse por las cañerías y causar problemas en otras zonas.

**Esto puede traer las siguientes consecuencias:**

- Desborde de aguas residuales en el interior de su hogar o el de su vecino.
- Posible contacto con organismos causantes de enfermedades.
- Crecientes costos de operación y mantenimiento para los organismos locales de alcantarillado y, en consecuencia, facturas más altas para los consumidores.
- Desborde de aguas residuales hacia parques, jardines, y calles.
- No verterá nunca grasa por el desagüe del fregadero ni en inodoros.
- Raspe la grasa y las sobras de comida y colóquelas en una lata o en la basura para desechárselas (o reciclarlas, si dispone de esta opción).
- Ponga filtros o coladores en los desagües de las fregaderas para atrapar las sobras de comida y otros sólidos, y deséchelos en la basura.
- Hable con sus amigos y vecinos sobre cómo impedir que la grasa entre en las alcantarillas.

**¡Usted puede ayudar! Ayude a evitar derrames en las alcantarillas de las siguientes maneras:**

13

### WHAT DOES CMOM REQUIRE?

The grease control section of an ordinance should contain the requirement to install grease traps at appropriate facilities (e.g., restaurants). Additionally, these facilities should be required to properly maintain the grease traps and pump them out on a regular basis. The document should also address periodic inspections of grease traps by collection system personnel and the ability to enforce. (i.e., levy fines on persistent offenders).

14

### WHAT WE CAN DO

- ESTABLISH AN ORDINANCE
- ENFORCE IT
- REPORT IT
- EDUCATE THE PUBLIC
- IDENTIFY HOT SPOTS
- FOLLOW UP AND SET A PM SCHEDULE
- DOCUMENT YOUR EFFORTS!

15

### SOME IDEAS

**The Adventures of Fatberg**  
by Nathan T Wright

☆☆☆☆ No Customer Reviews

A friendly creature named Fatberg leaves his home in the sewers and explores the streets of London, curious about humans and hoping to fit in. "Fatbergs" are formed in sewers when cooking fat and wet wipes stick together in large lumps. Sounds gross, right? But this Fatberg learns that no matter what the world says about him, he can still make a big difference.

**Product Details**

ISBN: 1523216042  
ISBN13: 9781523216048

See 1 Edition from \$9.79

**Selected**  
Format: Paperback  
Condition: Very Good

**\$9.79**  
Save \$0.20  
List Price \$9.99

1 Available

Quantity: 1

Add to Cart

Add to Wish List

16

### HAMILTON Intermediate School

## CAREER DAY PRESENTATION

- Born and raised in Harrison
- Attended Harrison Public Schools
  - Lincoln School
  - Washington Middle School
  - Harrison High School, (1986)

Louis C. Lambe June 7, 2019

17

### SOME IDEAS

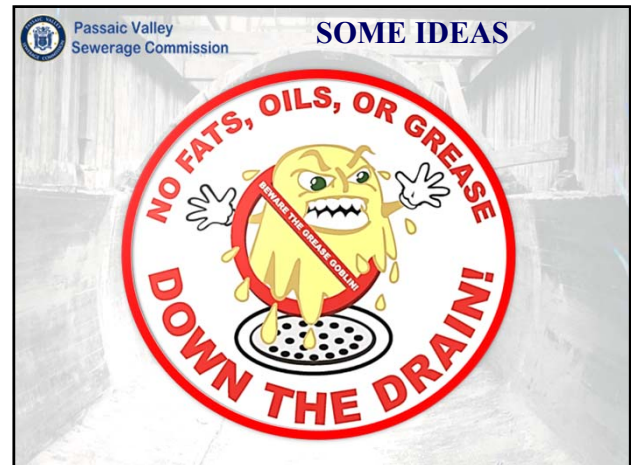
Passaic Valley Sewerage Commission

Image showing a group of people, including children and adults, gathered around a table covered with a blue cloth, displaying various items related to sewerage and grease control.

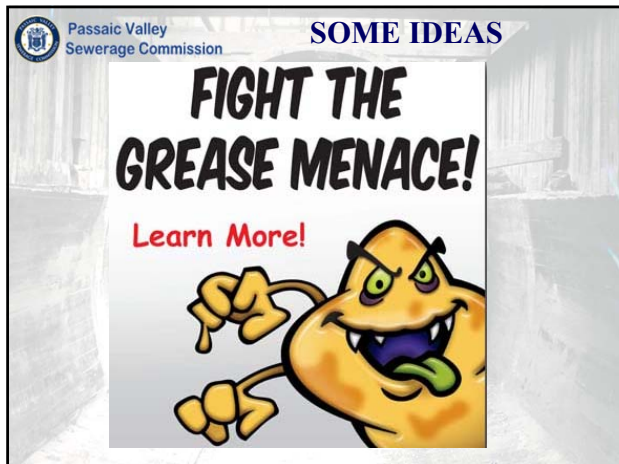
18



19



20



21



22



23



24